

February 12, 2021

VIA REGISTERED MAIL

Attention: Homeowner

Dear Sir/Madam:

Re: **Government of Alberta Notice Regarding Fireplaces Manufactured by Canadian Fire Hearth Manufacturing Inc. and Luxor Manufacturing Inc.**

---

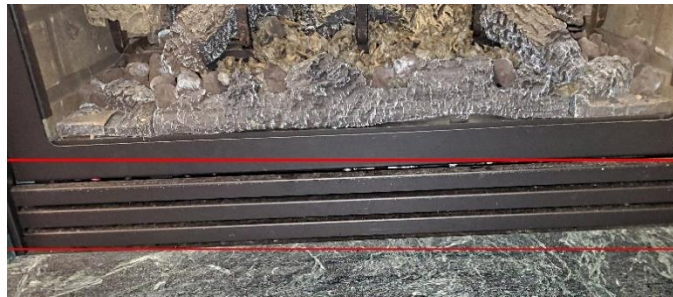
Our records show that your house was built by Genesis Builders Group Inc. and may have a gas fireplace installed in it.

We recently received the enclosed notice from the Government of Alberta (the “**Enclosed Notice**”) informing us that certain gas fireplaces must be **immediately** removed from service due to certification issues by certain fireplace manufacturers.

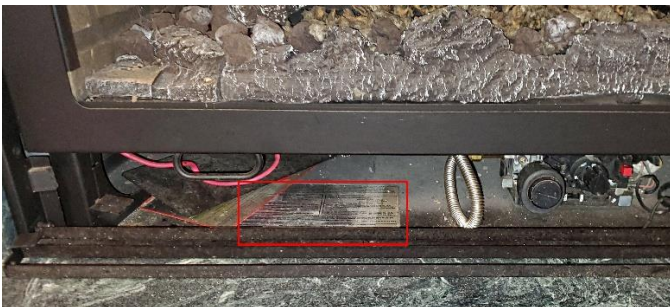
Please review this letter and the Enclosed Notice carefully and ensure you take the steps outlined in the Enclosed Notice.

#### **HOW TO DETERMINE IF YOUR FIREPLACE IS AFFECTED**

**STEP 1:** Pull open bottom cover.



**STEP 2:** The manufacturer, model and serial numbers are located on a “rating plate,” which is a metal plate that is usually permanently affixed to the fireplace. The rating plate will be located on the bottom left or right side of the fireplace.



*Images source: [fireplacedoorsonline.com](http://fireplacedoorsonline.com)*

## **IS MY FIREPLACE AFFECTED?**

The following gas fireplaces must be **immediately** removed from operation:

1. any gas fireplace manufactured by Canadian Fire Hearth Manufacturing Inc. or Luxor Manufacturing Inc. that does not bear a valid certification mark of the Standards Council of Canada certification body currently in use;
2. any gas fireplace manufactured by Canadian Fire Hearth Manufacturing Inc. or Luxor Manufacturing Inc. displaying a "LabTest Certification Inc." certification label associated **outside** the range of those serial numbers noted below:

<b>Make</b>	<b>Model</b>	<b>Serial Number Certified by LabTest</b>
Canadian Fire Hearth	RIV 42 (Riviera)	20980 to 21484
Canadian Fire Hearth	RIV 66 (Riviera)	60047 to 60128
Canadian Fire Hearth	MB 36	32407 to 34782
Canadian Fire Hearth	MB 42	11105 to 11251
Canadian Fire Hearth	OD 36	40219 to 40295
Canadian Fire Hearth	LV (Inserts)	50111 to 50144

3. any gas fireplace manufactured by **Luxor Manufacturing Inc.** displaying a "QAI Laboratories Ltd." certification label associated **outside** the range of those serial numbers noted below:

<b>Make</b>	<b>Model</b>	<b>Serial Number Certified by LabTest</b>
Luxor	RIV 42 (Riviera)	21727 to 22066
Luxor	RIV 66 (Riviera)	60232 to 60264
Luxor	MB 36	35049 to 35257
Luxor	MB 42	11300 to 11337

4. any gas fireplace manufactured by **Canadian Fire Hearth Manufacturing Inc.** or **Luxor Manufacturing Inc.** displaying a "OMNI-Test Laboratories Ltd." certification label associated **outside** the range of those serial numbers noted below:

<b>Make</b>	<b>Model</b>	<b>Serial Number Certified by LabTest</b>
Canadian Fire Hearth	MB 36	5000 to 8201
Canadian Fire Hearth	MB 36	8251 to 9999
Canadian Fire Hearth	MB 36	15100 to 15275

## **WHAT SHOULD I DO NEXT?**

In the event that your fireplace needs to be removed from operation, the Enclosed Notice provides contact information to determine next steps. If you have any questions, please contact **Alberta Municipal Affairs, Technical and Corporate Services** at **1-866-421-6929** for further information.

Sincerely,

**Genesis Builders Group Inc.**