

Your Genesis **Smart** Home

by Digital Lifestyles Inc.

STANDARD **INTEGRATED INTELLIGENCE** FOR YOUR HOME

Your Genesis Smart Home supports your connected lifestyle, providing peace of mind and convenience to monitor, control and automate your home anytime and anywhere in the world. Expertly programmed, integrated, and installed by Digital Lifestyles Inc., this reliable and secure solution is unlike any other in the marketplace. It integrates several independent smart devices and mobile applications into a single, unified app for your convenience and usability.

Smart Devices Standard

This package is included with every Genesis home.

HOME AUTOMATION HUB



Your Home Automation Hub is the 'brain' of your smart home. It allows all your apps and devices to be integrated and connected wirelessly. To operate and control your smart home system, you will use the SmartThings App by Samsung.

AMAZON ECHO SHOW



This acts as a digital assistant that utilizes voice commands to operate your smart home system. You can ask Alexa to control your lights, door locks, show you a live video feed of your front door and use it as an intercom to speak to visitors. As well, you can ask questions, stream TV, movies, music, and chat on video calls.

ECOBEE THERMOSTAT



This smart thermostat allows for remote management of your home's climate control. It has built in Amazon Alexa voice commands.

CASÉTA BY LUTRON SMART HOME WALL LIGHT SWITCHES AND DIMMERS X 3



Integrated with your SmartThings App, these smart switches and dimmers allow your lights to be programmed to turn on or off at a specific time of day or to give the illusion you are home, even when you are not. You can also control one or multiple lights at the same time and create scenes that set the brightness to reflect the activity or mood. Using the Welcome and Goodbye programmed scenes, you can turn on or off your lights in the foyer, kitchen and living room all with one touch of a button on your mobile device. Your smart light switches and dimmers also work manually.

CASÉTA BY LUTRON PICO™ WIRELESS CONTROL X 2



Lutron's Pico™ Wireless Control adds flexibility and further ease of use to your wireless lighting system. It allows you to raise, lower, or turn off lights, as well as to recall a favorite setting at any time from up to 30 ft away. The wall bracket is included.

CASÉTA BY LUTRON WIRELESS SMART BRIDGE PRO



This smart bridge unlocks the full power of Caséta light switches and dimmers. It allows for their set-up, control, monitoring, and provides the capability to integrate with smart home devices for expanded functionality.

Smart Devices Standard

This package is included with every Genesis home.



WEISER SMART CODE 10 TOUCH CONTEMPORARY WITH Z-WAVE 15

This touchscreen, electronic door lock means coming and going is keyless and effortless. You can lock and unlock your door from anywhere and operate hands-free with Amazon Alexa voice commands. Your automated lock will also work manually.



SMARTTHINGS MOTION SENSOR X 2

The motion sensor will detect movement in key areas of your home. This can trigger different actions in response to the movement. As well, the motion sensor can be programmed to turn on and off connected devices (such as lights) as people come and go in specified areas of your home. As well, this sensor can detect temperature changes. Alerts will be sent using the SmartThings App to your mobile device.



GARAGE DOOR INTERFACE

Connected to your garage door's existing motor, this interface allows you to control you garage door remotely from your mobile device and check to ensure it's closed when you leave home.



SMARTTHINGS MULTIPURPOSE SENSOR X2

Multipurpose sensors will monitor doors and windows, detecting if they have been opened or left open, if there has been a temperature change, or if vibration has been detected (i.e. window break or door breach). Alerts will be sent using the SmartThings App to your mobile device. This includes a custom adaptor for offset doors.



RING DOORBELL

This doorbell lets you see, hear, and speak to anyone at the door from your mobile device or PC. It also captures live video triggered by its motion detection capabilities and sends notifications to your mobile device or Alexa when visitors approach.

Smart Devices Upgrade Options

To enhance your home experience, take integrated intelligence a step further with the point of purchase upgrade options. Note: Each item must be individually selected.



ADDITIONAL RING DOORBELL

Choose to install an additional Ring Doorbell on your back door.



AMAZON ECHO DOT OR AMAZON ECHO SHOW

Choose additional Amazon Echo Dot's or Amazon Echo Show's for use in other areas of your home.



ADDITIONAL SMARTTHINGS MULTIPURPOSE SENSOR

Choose supplementary locations you would like to install multipurpose sensors. This includes a custom adaptor for offset doors.



ADDITIONAL CASÉTA BY LUTRON SMART HOME WALL LIGHT SWITCHES AND DIMMERS

Choose supplementary locations you would like to install smart switches and dimmers.



ADDITIONAL SMARTTHINGS MOTION SENSOR

Choose supplementary locations you would like to install motion sensors.



SMARTTHINGS SMART BULB

Save time and money when you install energy-efficient LED SmartThings Smart Bulbs for your lamps. Monitor and control from your SmartThings App on your mobile device or use Alexa voice commands to turn the lights on or off for you.



PHONE CHARGER OUTLET

Enjoy the convenience of a built in phone charger, inset into the granite kitchen counter top.

Smart Devices Upgrade Options

To enhance your home experience, take integrated intelligence a step further with the point of purchase upgrade options. Note: Each item must be individually selected.

SMART THINGS WATER LEAK SENSOR



Monitor water leaks, floods, and temperature in your home with the SmartThings Water Leak Sensors connected to the SmartThings App. This allows you to receive alerts, wherever you are in the world, on your mobile device if the sensor detects water leaks or temperature changes.

RECESSED TV BACK BOX



Constructed of durable sheet metal, this state-of-the-art box elegantly fits your equipment behind the TV in both residential and commercial settings. This box's metal construction and UL listing ensures that it meets building codes. This allows for your flat screen TV to be mounted completely flush to the wall, while concealing all wires and boxes. This is available for drywall installation only.

FIRST ALERT SMOKE DETECTOR AND CARBON MONOXIDE ALARM



Protect your home from smoke and carbon monoxide with First Alert alarms that are connected to the SmartThings App. This allows you to receive alerts on your mobile device if the alarm detects smoke or carbon monoxide.

PROFESSIONAL TV WALL MOUNTING SERVICE



Supply your own TV or purchase through Digital Lifestyles and have it professionally wall mounted. This includes the bracket.

Note: This does not include, wiring, accessories and backbox. Rough in wiring must be in place. Stone, brick and tile installation quoted per project. Bracket may vary.

SMART THINGS OUTLET



Control lights, electronics, and small appliances with SmartThings Outlets. Automate them to turn on or off when doors are opened, when there's activity in your home, and much more. As well, you can manage your SmartThings Outlets and other connected devices with preset Scenes. Control your SmartThings Outlets using the Smart Things App or by Amazon Alexa voice commands.

Smart Devices Upgrade Options

To enhance your home experience, take integrated intelligence a step further with the point of purchase upgrade options. Note: Each item must be individually selected.



ARAKNIS PROFESSIONAL ROUTER

Ensure fast, reliable, and secure Wi-Fi performance with an Araknis professional VPN router. This includes free VPN and the set-up of up to 5 devices and peripherals (i.e. printer, mobile devices etc.).

PROGRAMMING ADVANCED ALEXA VOICE COMMANDS

"ALEXA,
ORDER
LAUNDRY
DETERGENT."

Advanced Alexa voice commands can be programmed during your appointment that are tailored to your connected lifestyle. A member of the Digital Lifestyles team can meet with you to understand your daily routines and determine additional voice commands that complement your family's needs.



WI-FI ACCESS POINTS

Expand your wireless coverage throughout your home and even outdoors, ensuring fast and reliable Wi-Fi connection at all times. The quantity of Wi-Fi Access Points required is dependent on your square footage.

PROGRAMMING ADVANCED SMART SCENES

"ALEXA,
START MY
MORNING
ROUTINE."

Advanced smart scenes can be programmed at point of purchase that are tailored to your connected lifestyle. For example, an advanced Goodbye Scene could turn down the temperature, turn off your music, shut off multiple lights in your home and lock the door.

A member of the Digital Lifestyles team can meet with you to understand your daily routines and determine additional Smart Scenes that complement your family's needs.

Smart Devices Upgrade Options

To enhance your home experience, take integrated intelligence a step further with the point of purchase upgrade options. Note: Each item must be individually selected.

OUTLET SHELF

This is a great space-saving solution for small electronics up to 10 pounds. Standard and Decora style outlet cover plates are included. This allows for easy power cord management and plug-in. This includes a replacement short power cable for proper concealment.



SONOS ONE

Get rich, room filling sound with Sonos One powerful smart speaker with voice control built in. Available in black or white. This includes being installed and configured on your network.



DAHUA SECURITY CAMERA SYSTEM 4CH 2 TB DVR WITH 4 2MP

The Dahua Security Camera System provides a complete video surveillance solution for your property. The cameras offer the clarity of high definition video with built-in motion detection and alarm triggers. This is controllable and viewable on your mobile device 24/7, anywhere in the world with internet connection. This includes rough in wiring, installation, waterproof back boxes, accessories and connection to your network along with a client tutorial.



WALL MOUNT FOR SONOS ONE

Securely affix your One speaker to any wall with this wall mount. This does not include the electrical outlet.



SONOS MOVE

SONOS Move are weatherproof, durable, battery-powered, drop-resistant outdoor speakers. Available in black or white.



SMARTTHINGS BUTTON

Control connected devices at the touch of a button. Integrated with your Home Automation Hub, the button allows you to set multiple lights, electronics, and small appliances to turn on and off.



FIREPLACE INTEGRATION

Program integration with your Home Automation Hub means you can control your fireplace from your mobile device, voice control or integrate turning your fireplace on or off into a smart scene.



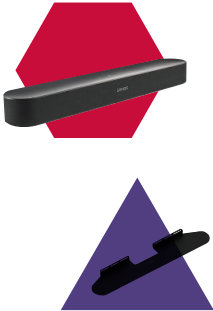
Smart Devices Upgrade Options

To enhance your home experience, take integrated intelligence a step further with the point of purchase upgrade options. Note: Each item must be individually selected.

SONOS SOUND SYSTEM

The following SONOS products can be integrated with your Wi-Fi network and configured allowing you to stream music, TV and more all from one system. SONOS can be programmed to work with all the services you know and love like Apple Music, Spotify, Amazon Music, Audible, Deezer, Pandora, Tunes, iHeartRadio, Google Play Music, YouTube Music and more.

SONOS BEAM SOUNDBAR AND WALL MOUNT



This smart compact sound bar for TV, music and more offers the best in high definition sound, specifically tuned by Oscar-winning sound engineers! The Beam has built-in Amazon Alexa voice control so you can play music, check the news, set alarms, get your questions answered and more. Available in black or white.

SONOS SUB



Hear and feel the difference when you connect this wireless subwoofer to your SONOS System. Two force-cancelling drivers at the center of the Sub eliminate vibration and rattle so you get powerful bass without any distortion.

SONOS AMP



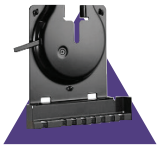
Bring the SONOS experience to any SONOS speaker with the Amp.

SOUND ACOUSTICS IN-CEILING SPEAKERS



Enjoy crystal clear sound and comfortable listening from anywhere in the room with Sound Acoustics In-Ceiling speakers. Includes rough in wiring, pre-construction brackets and installation of speakers only. Amplifiers sold separately.

SLIM WALL MOUNT FOR SONOS AMP



This wall mount works on any wall surface, including cabinetry, allowing the SONOS Amp to be mounted vertically or upside-down. This allows for the Amp to be nearly flush with the surface where it is mounted to help maximize space and reduce clutter.

Smart Devices Upgrade Options

To enhance your home experience, take integrated intelligence a step further with the point of purchase upgrade options. Note: Each item must be individually selected.

SAMSUNG FRAME TV AND BACK BOX

A TV when it's on and art when it's off, Samsung's Frame TV brings you the high-resolution picture quality of QLED. Available in a variety of sizes, from 32" to 75", The Frame is a canvas that reflects your style whether displaying your favourite family photos or choosing from over 1,200 works of art to complement any space. Select from a range of customizable bezel colours that fit your taste and style. Installation with the back box is included. Rough in cabling and electrical must be in place.

